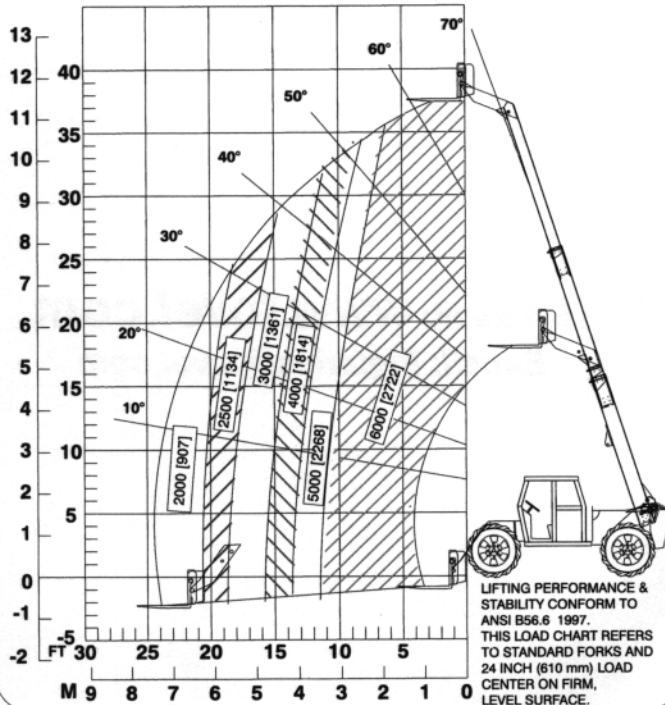


## TL 6-44-36



- ENGINE - DIESEL PERKINS TURBO 1004-4T HORSE POWER 108
- TRANSMISSION - POWER SHIFT
- BRAKES - WET DISK. PARKING BRAKE ON TRANSMISSION. MICO FULLY HYD. POWER BRAKE C/W ACCUMULATOR.

**DIMENSIONS:**

OVERALL LENGTH (less forks)	224" (5690 mm)
OVERALL WIDTH	96" (2438 mm)
OVERALL HEIGHT	94" (2388 mm)
WHEELBASE	125" (3175 mm)
GROUND CLEARANCE	20" (508 mm)
OUTER TURNING RADIUS	156" (3962 mm)

**STANDARD EQUIPMENT:**

- POWER SHIFT TRANS. • NEUTRAL SAFETY START • 2-4 & CRAB WHEEL STEERING • FRAME LEVELING • AUTO CARRIAGE LOAD LEVELING • 50° CARRIAGE WITH SHAFT MOUNT FLOATING FORKS • SAFETY LOCK VALVES ON CYLINDERS • PLANETARY FRONT & REAR AXLES • HYDRAULIC WET DISK BRAKES • OSCILLATING REAR AXLE • DASH MOUNTED FRAME LEVEL INDICATOR • FOPS OPERATOR CAB • EMERGENCY HAND BRAKE • MECHANICAL OVER HYDRAULIC JOYSTICK BOOM CONTROLS • ADJUSTABLE SEAT WITH SAFETY BELT • HORN & BACK-UP ALARM • FULL GAUGE INSTRUMENT PANEL • VANDALISM PROTECTION.

**OPTIONAL EQUIPMENT:**

- AUXILIARY HYDRAULICS • FULL ENCLOSED CAB WITH FRONT WINDSHIELD WIPER, HEATER AND DEFROSTER FANS • LIGHT PACKAGE • BLOCK HEATER • FORK & CARRIAGE COMBINATIONS (INQUIRE WITH FACTORY).

THE INFORMATION CONTAINED HEREIN IS GENERAL IN NATURE AND IS NOT INTENDED FOR SPECIFIC APPLICATION PURPOSES. TQVEL RESERVES THE RIGHT TO MAKE CHANGES IN SPECIFICATION SHOWN HEREIN AND IMPROVEMENTS, OR DISCONTINUE MANUFACTURE AT ANY TIME WITHOUT NOTICE OR OBLIGATION.

- AXLES - (F & R) PLANETARY REDUCTION C/W: LIMITED SLIP.
- TIRES - LOADER GRADER TRACTION 15.5 x 25 (F&R)
- BOOM - 3 STAGE HEAVY DUTY STRUCTURAL TUBING, REPLACEABLE WEAR PADS, SAFETY LOCK VALVES STANDARD ON ALL HYDRAULIC CIRCUITS.

**OPERATING SPECS:**

MAX LIFT CAPACITY	6,000 (2722 kg)
LIFT HEIGHT	37' 2" (11.34 m)
REACH (front tire to 24" L.C.)	24' (7.32 m)
NEGATIVE REACH	2' 7" (787 mm)
SHIPPING WEIGHT	19,500 (8845 kg)
FRAME LEVELER (both L & R)	11 degrees